



**Grade 4 to 6**

**Salmon Pin Project**

**Complete this project to earn your pin!**

**1. List the five types of Pacific salmon that we have in BC:**

**2. Many salmon are anadromous, which means:**

**3. What do salmon like to eat?**

# The Salmon Lifecycle

Salmon are **anadromous**, which means they are born in fresh water, then swim to the ocean to grow into adults, then swim back to fresh water to reproduce. Below are pictures of different parts of the salmon lifecycle. First **match** the picture to the appropriate term. After that, **number** the pictures in order, starting with the salmon eggs.

Salmon eggs



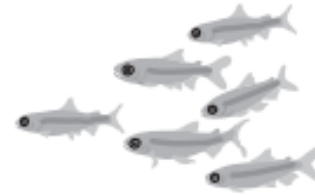
\_\_\_\_\_

Spawning



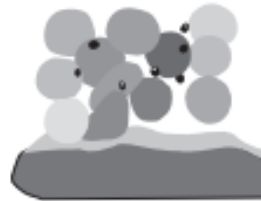
\_\_\_\_\_

Salmon fry



\_\_\_\_\_

Building a redd  
(a nest)



1  
\_\_\_\_\_

Ocean living



\_\_\_\_\_

Salmon smolts



\_\_\_\_\_

